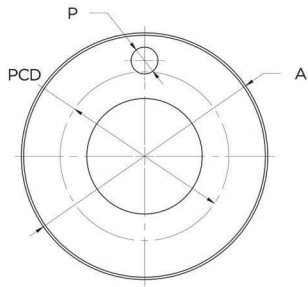
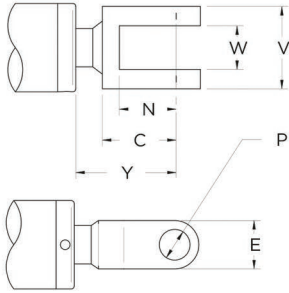


Flange Mount - Round



Flange Mount - Round

CYLINDER BORE		A	P	HOLES	PCD	WIDTH
in	mm					
1.5"	38.1	106	11	4	84	11
2.0"	50.8	128	13	4	101	11
2.5"	63.5	156	17	4	121	15
3.0"	76.2	176	17	4	141	19
3.5"	88.9	204	21	4	161	24
4.0"	101.6	217	21	4	174	30



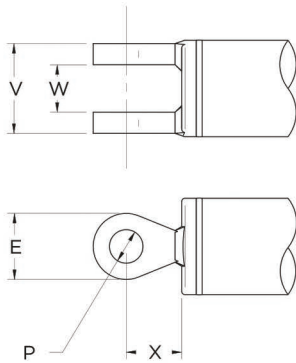
FABRICATED FEMALE CLEVIS

Female Clevis - Rod Application

CYLINDER BORE		TYPE	W	P	Y	C	N	E	V
in	mm			(B11)	min *	†			
1.5"	38.1	Formed	23	15.88	48	38	28	32	43
2.0"	50.8	Formed	28	22.23	60	49	37	40	52
2.5"	63.5	Formed	36	25.40	71	58	42	50	68
2.5"	63.5	Cast SAE	27.5	25.40	86	73	57	55	70
3.0"	76.2	Formed	44	31.75	79	66	50	64	76
3.0"	76.2	Cast SAE	27.5	25.40	86	73	57	55	70
3.5"	88.9	Formed	49	38.10	92	77	57	76	89
4.0"	101.6	Fabricated	54	44.45	101	86	66	90	94

* Rod Applications only.

† "X" dimension for base applications.

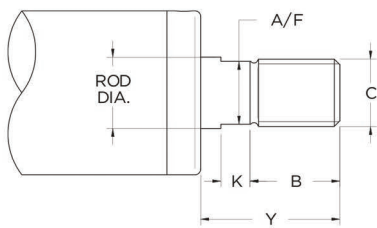


FABRICATED BASE CLEVIS

Female Clevis - Base Application

CYLINDER BORE		TYPE	W	P	X	E	V
in	mm			(B11)			
1.5"	38.1	Fabricated	23	15.88	28	32	43
2.0"	50.8	Fabricated	28	22.23	37	40	52
2.0"	50.8	Cast SAE	22.5	19.05	38	44	59
2.5"	63.5	Fabricated	36	25.40	42	50	68
2.5"	63.5	Cast SAE	27.5	25.40	51	55	70
3.0"	76.2	Fabricated	44	31.75	50	64	76
3.0"	76.2	Cast SAE	27.5	25.40	51	55	70
3.5"	88.9	Fabricated	49	38.10	57	76	89
4.0"	101.6	Fabricated	54	44.45	66	90	94

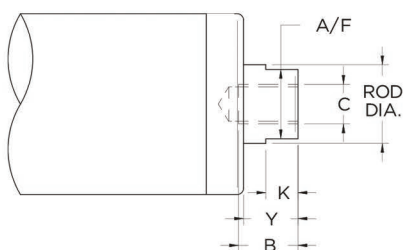
Threaded Rod - External



ROD DIAMETER		Y	B	C	C	K	A/F	T.P.I
in	mm			UNF *	METRIC *			UNF *
0.750"	19.05	40	20	5/8 "	M16	11	16	18
1.000"	25.40	50	30	7/8 "	M20	11	23	14
1.250"	31.75	62	40	1 1/8 "	M30	13	28	12
1.375"	34.92	62	40	1 1/8 "	M30	13	32	12
1.500"	38.10	80	40	1 1/8 "	M30	13	32	12
1.750"	44.45	95	50	1 1/2 "	M36	15	40	12
2.000"	50.80	95	60	1 3/4 "	M42	15	45	12
2.250"	57.15	100	65	2 "	M48	15	51	12
2.500"	63.50	100	65	2 "	M48	15	54	12
3.000"	76.20	125	80	2 1/2 "	M64	20	65	12

* Nominate UNF or Metric

Threaded Rod - Internal



ROD DIAMETER		Y	B	C	C	K	A/F	T.P.I
in	mm			UNF *	METRIC *			UNF *
0.750"	19.05	20	15	3/8 "	M10	11	16	24
1.000"	25.40	20	21	1/2 "	M14	11	23	20
1.250"	31.75	22	24	5/8 "	M16	13	28	18
1.375"	34.92	22	24	5/8 "	M16	13	32	18
1.500"	38.10	22	30	5/8 "	M20	13	32	18
1.750"	44.45	30	30	3/4 "	M20	16	40	16
2.000"	50.80	35	36	1 "	M24	15	45	12
2.250"	57.15	35	45	1 1/4 "	M30	15	51	12
2.500"	63.50	35	45	1 1/4 "	M30	15	54	12
3.000"	76.20	35	54	1 1/2 "	M36	20	65	12

* Nominate UNF or Metric